



centennial park

2015 - 2030
future concepts





celebrating life

about centennial park

Centennial Park has been at the forefront of providing the broader South Australian community with traditional and contemporary products and services since the park was established in 1936.

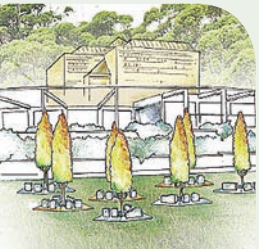
Centennial Park is situated on 100 acres of land and as of 2014 maintains over 135,000 positions (burial and cremation memorial) which are provided for use by the broader community.

As community demographics continue to change so do the needs and expectations of the community. Centennial Park continually reviews it's product and service offerings to ensure these needs are met.

Centennial Park aims to achieve this by;

- Meeting changing community needs
- Enhancing the overall visitor experience

This Cemetery Master Plan has been developed to identify some concepts on how we will achieve these two goals over the next ten to fifteen years. Thorough community consultation will occur to ensure our proposed concepts and final products align with community expectations and needs.



2015 - 2020 - proposed concepts

enhancing visitor experience

1

western entrance
revitalisation

2

safer
traffic flows

3

cafe & florist

4

revitalised
contemplation court

meeting community needs

5

full monumentation,
grander monuments
and couch lawn

6

mausoleum

7

family vaults

8

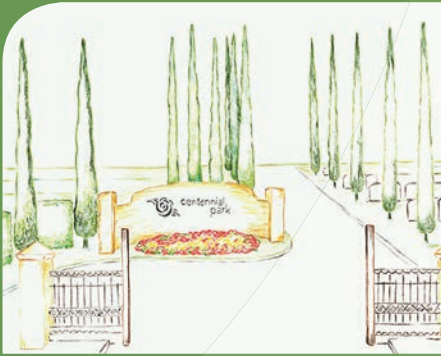
burial gardens

9

sunken garden



2015 - 2020 - enhancing visitor experience



Manse Terrace Entrance

Western Entrance Revitalisation

The visitor experience at Centennial Park begins with the entrances to the park. A large portion of regular visitors to the park enter via the western entry off Manse Terrace and for this reason the Manse western entrance will be revitalised.

Refurbished gates, a feature entrance wall and intricate landscaping featuring floral displays will provide a positive visitor experience.

Safer Traffic Flows

The park is a shared zone where visitors enter and traverse the grounds and gardens by foot, on bicycles and also in vehicles. To further enhance the safety of the park for all visitors, a traffic management study has been completed and traffic flows will be controlled more rigorously throughout the park. The current roadways are often used as 'shortcuts' for people who are not actually visiting the park. In addition, many of the traditional roads cause confusion and potential for accidents.

As roads are removed, the land will be reclaimed for development for further burial and cremation memorial options.

Café / Florist

With thousands of visitors to the park each week, many of whom spend considerable time throughout the beautifully presented gardens and lawn areas, it seems fitting that there is provision for onsite café and florist facilities to complete the visitor experience.

Whether gathering with extended family and friends after a funeral service, or simply spending some time in the park to remember and honour the lives of loved ones lost, the provision of an informal meeting space, light meals and beverages is an option that the community has expressed interest in.

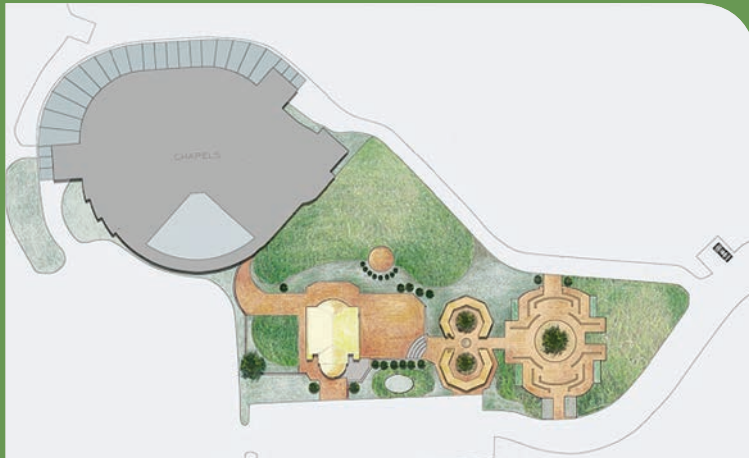
over 1985 new burial positions developed



Revitalised Contemplation Court

Centennial Park was the first cemetery to introduce the concept of Contemplation Court, a temporary resting place for cremation ashes while families contemplate longer term arrangements.

The existing facility will be replaced with a new Contemplation Area which will be constructed within the Jubilee Precinct within close proximity to the existing chapels, the proposed café / florist and ample car parking.



Proposed Jubilee Precinct Café / Florist

2015 - 2020 - meeting community needs

Full Monumentation, Grander Monuments and Couch Lawn

Centennial Park houses a large number of Catholic and Orthodox burial sections, and maintains strong ties to these community groups, in particular the Greek and Italian communities. These communities maintain a strong preference for burial and as such Centennial Park is expanding its current burial offerings.

As a first for Centennial Park, in ground vaults will be made available with an option for full monumentation. This will fulfil a genuine need for diversity of options for those who prefer to be interred at Centennial Park or in the south of metropolitan Adelaide.

In addition to the provision of full monument vault options, new areas will be developed for earth burial with the option for grander monuments. This further extends the choice of memorial options for families when looking for unique or particular headstone designs.

Further development of a couch lawn area will provide large irrigated burial sites which can be chosen by families who are looking for an earth burial option but still want to ensure that their loved ones are interred in a large casket.

newly
developed full
monumentation
and mausoleum
options

Mausoleum

As community interest in Mausoleums continues, Centennial Park will look to cater for this need through the creation of a central Mausoleum which will be featured in the heart of the park. It is proposed that the Mausoleum will provide for at least 80 above ground vaults.



Full Monumentation Burial

contemporary and modernised park like burial options

Family Vaults

Family crypts have also been requested and space will be made available for the creation of these premium interment options.



Mausoleum

Burial Gardens

The core design principle of our new burial garden designs is to focus clusters of burials around a central tree, woven together so that from above the garden looks similar to a honeycomb. From ground level and for visitors, the area looks like an orchard with vibrant trees enclosed in granite surrounds and lush lawn area in between.

Burial garden options will be provided throughout Centennial Park to ensure that these more contemporary and park like burial options are available to the community.

Sunken Garden

Cremation Memorial options will also be expanded with the redevelopment of the old Contemplation Court site into a new Sunken Garden which completes the expansion of the Springbank Island precinct. The area will focus on contemporary memorial options and retain the existing water feature which is the centrepiece for Contemplation Court.



Sunken Garden

longer term concepts

future projects

1

eastern entrance
revitalisation

2

south east burial
cluster garden

3

natural burial
garden

4

derrick east
burial gardens

5

north east burial
gardens

6

central east rose
garden

7

western family
crypts

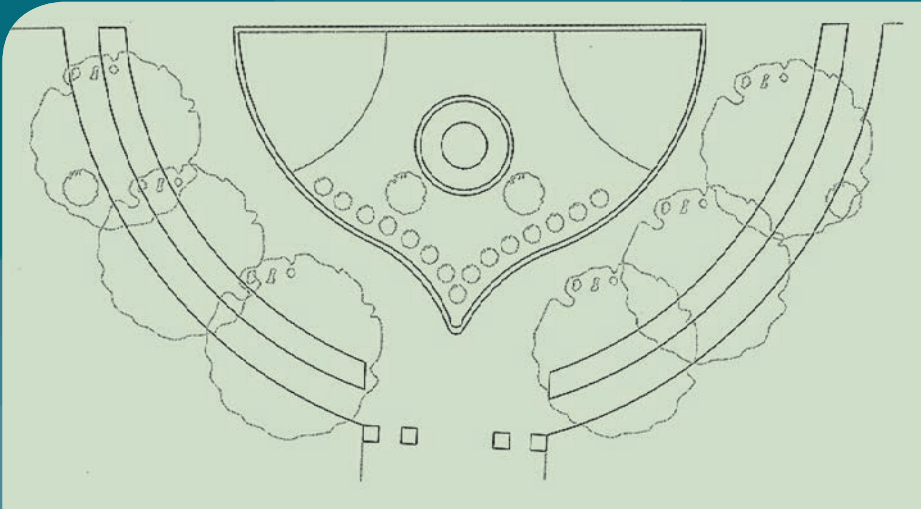


longer term concepts

Eastern Entrance Revitalisation

Goodwood Road is a hive of activity during the day and at times makes entry into the park for south bound traffic a challenge. Significant work will be undertaken to create better access and turning lanes into the park.

Once completed, revitalisation of the main eastern entrance which leads to the Jubilee Precinct will commence. The revitalised entrance will feature a traffic island with sculptured gardens and distinctive signage welcoming visitors into the park.



over 3350 new cremation memorial positions

South East Burial Cluster Garden

The development of a unique burial garden in the South East garden area will introduce small clusters of burial positions in hexagonal formations. Each cluster will accommodate 16 burial sites. In total there will be an additional 160 burial sites made available throughout the South East Garden area in this manner.

Natural Burial Garden

As the interest in natural burial grows, options may be provided through the development of a small natural burial area at the western end of the cemetery. The natural burial garden will differ from the rest of Centennial Park as there will be no formal structure determining where burials will occur and the area will be scattered with native trees. The natural burial garden will also be different as there will be no grave markers or headstones of any kind.

Derrick East Burial Gardens

Burial gardens may be developed at the eastern end of Derrick Gardens and opposite the Charles Newman burial gardens essentially extending the number of burial positions available by around 584 burial sites. The Derrick East burial gardens will feature Manchurian Pears as their centrepiece.

North East Burial Gardens

The existing North East Garden area will be redeveloped into a third burial garden. The North East burial garden will expand the number of burial sites by a further 440 graves.

Central East Rose Garden

Traditional rose gardens are synonymous with Centennial Park and a third traditionally structured rose garden will be developed to complement the two existing formal rose gardens (West Rose Garden and Charles Newman Rose Garden). The Central East rose garden will be located on the eastern side of the Jubilee Complex and will feature over 3350 new cremation memorial positions.

Western Family Crypts

Dependant on community demand, family crypt options may be extended for these premium products. Land along the western boundary of the park will be allocated for this purpose as required. It is anticipated that there will be potential for an additional 12 family crypts in this area, taking the total provided for within the park to 28.

centennial park's commitment to upkeep of the grounds and the environment

Centennial Park takes great pride in our park. We believe that the public of South Australia, in choosing Centennial Park as the final resting place for their relatives, are entitled to expect the very highest standards.

Centennial Park is committed to the continual upkeep and maintenance of all areas of the cemetery and grounds in addition to developing new options. This commitment is demonstrated through the maintenance of a future upkeep fund.

In the 2013-2014 financial year over \$800,000 was spent on ground and garden maintenance alone. This included the replanting of over 300 roses, roadside curb replacements and complete garden renovations.

Centennial Park will maintain it's commitment to all areas of our park, ensuring that Centennial Park remains at the forefront of providing quality

products and services and meeting high community expectations.

Environmental Commitment

Centennial Park prides itself on its innovation and proactive approaches to environmental management and is recognised as a leader in environmental management within the cemetery industry both nationally and internationally.

Our Environmental Plan sets out our approach to ecologically sustainable development within Centennial Park. The plan has established six key environmental objectives that will guide environmental management for the medium to long term:

1. A focus on ecologically sustainable development.
2. Actively addressing climate change through low energy use.

3. Sustainable waste management focussing on waste minimisation and resource recovery.

4. Managing and using water resources sustainably.

5. Effective conservation and enhancement of existing natural resources.

6. Actively supporting third party suppliers with demonstrated environmentally sustainable practices

Centennial Park has a culturally embedded commitment to ensuring that all of our business activities are performed in an environmentally responsible and sustainable manner and is enshrined in our Strategic Plan.

full offset of greenhouse gas emissions



www.centennialpark.org

location of centennial park



Centennial Park Cemetery Authority

760 Goodwood Road Pasadena South Australia 5042
Telephone 08 8276 6011 Facsimile 08 8275 2277
enquiry@centpark.org.au www.centennialpark.org